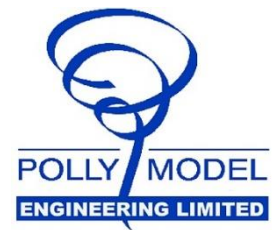


*Federation of Model  
Engineering Societies*

## **FEDERATION TROPHY & POLLY MODEL ENGINEERING PRIZE**



### **2023 AWARD WINNERS**

**The awards were made at the FMES AGM Event  
Day held at Wakefield National Coal Mining  
Museum on 25<sup>th</sup> March 2023**

**Here are the three award winners.....**

[info@fmes.org.uk](mailto:info@fmes.org.uk) 01327 342167 [www.fmes.org.uk](http://www.fmes.org.uk)

A private company, limited by guarantee, registered in England and Wales, No. 9002737  
Registered Office: 18 Wakefield Way, Nether Heyford, Northants, England, NN7 3LU

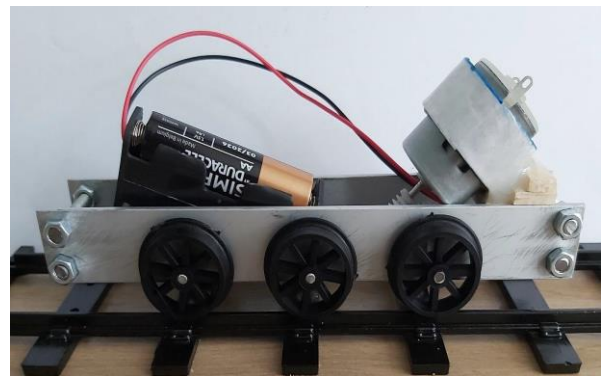
## Spencer Priddy

Spencer is 11 years old and a member of Portsmouth Model Engineering Society. He joined with his father as soon as he could following Covid restrictions. He decided to build an SM32 gauge 'diesel' locomotive inspired by 'Mavis' of Thomas the Tank Engine fame but actually a scale class 04 shunter. Although Spencer had outline drawings available, he produced his own working drawings that he detailed to identify parts and assembly.

He then set about making the locomotive chassis using hand tools and some power tools. This allowed him to understand the behaviour of metals and plastics and involved cutting, filing, drilling and eventually fitting. He used parts to his own design and made by him, as well as commercial components, some of which required modification and all required fitting. He also learned a sensible approach to safety when using such tools. Once the parts had been made and the chassis tested, he could turn to the body. Spencer drew the body to scale and then, having decided on a construction method, cut out parts from balsa and assembled them. This was then finished and painted and mounted on the chassis. The final task was to wire the locomotive up and successfully test it.

Spencer, in spite of his youthful years, has been mentored at his club and has learned much about track safety and support required for public running days including signage, safety and servicing locomotives, as well as learning, on club days, how to fire and drive a steam locomotive. He has also presented his project and other items for SM32 garden railways at a club meeting presentation which was well received.

Spencer received the winner's trophy, £50 Polly Model Engineering voucher and £50 federation cash prize at the 2023 AGM event.



## James Barrett

James is a member of Peterborough Society of Model Engineers Ltd., where, at 20 years of age, he is the youngest member of the club. He is focussing very much on developing his skills and tools for model engineering and has acquired a Milnes lathe that he has set about adjusting and preparing for use. He has complemented this with a rather large Cincinnati mill that was bereft of tooling. To remedy this, he has been designing and making tooling, including a collet chuck that he has designed using Autocad. This was made using lathes and handwork to create a good fit for this necessarily accurate component.

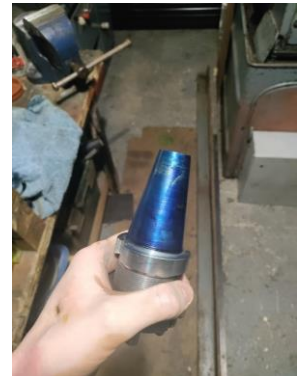
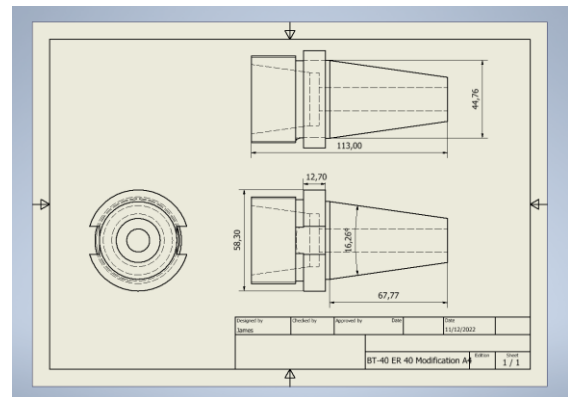
He has also applied his developing practical skills with contributions at the club including modifying the portable track with some creative ideas to speed up the process.

To follow on from this, he has volunteered to support the club's portable track event bookings next year.

He has engaged in other 'non-engineering' activities as well, by organising and running raffles at club meetings to swell club funds.

James is a consistent attendee at club meetings, and has demonstrated his support for the club both in engineering terms and in management activity by becoming a committee member.

James was awarded his Certificate of Commendation and a £50 Polly Model Engineering voucher. This was presented at a Peterborough SME evening event as he was unable to attend the FMES AGM.



## Tom Readman

Tom is a member of Ryedale Society of Model Engineers. He also is very active in '12" to the foot' railways as cleaner/maintenance at the North Yorks Moors Railway and at the North Eastern Preservation Group (where he learned to use a lathe and milling machine), and he has just started an apprenticeship with British Steel. The precision skills such as bluing and fitting white metal bearings on full size engines (including 'Sir Nigel Gresley') stands him in good stead on the smaller models.

He has been developing his model engineering skills for a number of years in a supportive 'model engineering' family and has several projects 'under his belt'. He has made much progress with a 5" gauge dock tank engine to the 'twin sisters' design, with a rolling chassis and ancillary components, and is currently at work on the connecting rods.

To complement this, Tom has been working on a 5" gauge wagon with an interesting mix of metal and wood work (it has a wooden chassis).

This young prolific modeller has also made a 'wig-wag' oscillating engine to plans freely available from the internet.

Although small by comparison to the other examples above, this is another test of Tom's making and fitting skills that he is clearly developing to a high degree.

As well as his voluntary work with full size steam, he supports his club with no doubt never ending maintenance work such as replacing sleepers and site upkeep, especially since the restrictions of Covid were lifted.

Tom was presented with his Certificate of Commendation and £50 Polly Model Engineering voucher at his club's AGM as he was unable to attend the FMES AGM.

