



NEWSLETTER

September 2022

Model engineers join the nation in mourning our late Queen who gave us so much in so many ways.
God save King Charles III



Volume
12 Issue 3 September 2022

info@fmes.org.uk 01327 342167 www.fmes.org.uk

A private company, limited by guarantee, registered in England and Wales, No. 9002737
Registered Office: 18 Wakefield Way, Nether Heyford, Northants. England, NN7 3LU

Federation of Model Engineering Societies Newsletter

Editorial

It is a close run race between the effects of the anaesthetic, when you come out of it, and the resultant pain from the operation itself. The anaesthetic stays with you for a week or so and one is variously giddy or tired. Such are the conditions under which your latest newsletter is coming together so please help with any comments, oversights or mistakes.

This emphasises that model engineers do get old, rather as the rest of the population does and we need replacing from time to time for the organisation to continue and flourish. Many of us shrug it off, let someone else do it, but my recent experience has brought it home with a jolt or a stab of pain. (Actually a month of pain!)

We would really like to think that from the twenty thousand or so model engineers who are members of the Federation clubs we could find two or three who might consider putting in a bit of an effort to relieve some of us before you (or we) have no choice!!

This is a good moment to thank, the two members who have volunteered to be 'account examiners' for the Federation. This is not the most exciting job but necessary to confirm that the Treasurer has not run off with the family silver.

Putting together the newsletter is really quite fun and there are many sources happy to help. Here, Member Societies are invaluable. OR, how about organising venues for the Rally and AGM; one gets to visit clubs, find new friends and be part of a creative process and what is probably most satisfying, is DOING SOMETHING USEFUL. The Rev Awdry used to have 'really useful engines' on his railway. If you are a 'really useful member', come and see us at the MEX.

With all this medical lark, I missed the September rally. Thanks to Mike Chrisp for the article.

David Goyder. Newsletter Editor

Chairman's Chat

A short while ago we had the sad news of the passing of the country's monarch of seventy years, Queen Elizabeth II. Whether one is a royalist or a republican there is no denying that our late queen gave great service to this country over all those years. Whilst I doubt that no stalwarts of any ME club have served our hobby for such a long period I am sure that many clubs have been thankful for those chairmen, secretaries, treasurers, clubhouse managers, track maintenance folk and all the other people who give of their time to run our clubs. Our hobby would be much the poorer without these people. I know we all lead busy lives but to those of you not actively involved in running your club can I just ask you to consider how you can help in some (possibly small) way in the furtherance of the enjoyment of our hobby, don't leave it to others.

As I write this the Midland ME Exhibition is not many days away and we wait to hear the "fate" of other exhibitions. Exhibitions have, as well as a means of stocking up on tools, materials, etc., always been somewhere to meet old and make new friends from other clubs, organisations, etc., rallies, such as the Fed's rally held at a different club every year, serve a similar purpose. But without the support of us all these sorts of events are not viable, so come on, don't let these events wither and die, support them, they are all part of a healthy ME hobby. However you support our hobby, may I wish you a happy and enjoyable time while model engineering.

Bob Polley. Chairman

Breaking News

We are pleased to announce that the FMES 2023 Rally and Australian Trophy competition will be held at Frimley Lodge Miniature Railway in Surrey on the weekend of 16 September 2023. Built and operated by Frimley and Ascot Locomotive Club (FALC), the railway has a kilometre of 3.5", 5" and 7.25" ground level track and a 200m raised 2.5", 3.5" and 5" gauge track. Our thanks to FALC for their offer as hosts, more details will follow.

Federation of Model Engineering Societies Newsletter

Federation Annual Rally and Australia Trophy hosted by Sutton Coldfield 3rd September 2022



Federation Rally 2022

Hosted by Sutton Coldfield Model Engineering Society Ltd.



Part of the attractive 300 ft. SM32 layout.



Busy steaming bays for the 480 ft. raised track.

Hosted by members of Sutton Coldfield MES Ltd on their attractive Balleney Green site at Little Hay, Saturday's records of this year's FMES Autumn Rally, held 3rd - 4th September reveal a total of 23 visitors and 13 locomotives. More would have been welcome but those of us there enjoyed an excellent day and felt sorry for absentees. We are very grateful for the efforts of SCMES members and friends who worked hard beforehand to ensure everything was ready and spent time during the event looking after their visitors.

The Little Hay site boasts a ground level track approximately 1/2 mile long for 7 1/4 and 5in. gauge locomotives and rolling stock, a 480 ft. 5, 3 1/2 and 2 1/2 in. gauge raised track and a very attractively landscaped 300 ft. SM32 layout.

Saturday's proceedings included the annual competition for the Australian Association of Live Steamers Trophy awarded to the best working steam locomotive at the event modelled on a Commonwealth prototype in any gauge from 2 1/2 - 7 1/4 in. inclusive. The winner is chosen by a team of three judges consisting of last year's winner and representatives of the host society and the Federation. This year's judges were Martin Parham, Phil Davies and Ivan Hurst respectively.



Bob Polley, Bob Walker and Mike Chrisp sporting co-ordinated FMES sweatshirts.



David Mayall enjoys a run with his fine 5in. gauge BR Class 2 locomotive.



Mike Chrisp presents David Mayall with the Australian Association of Live Steamers Trophy.

A similar annual competition for the Federation of Model Engineering Societies Trophy is held in Australia at the AALS Easter Convention. These trophies commemorate the affiliation of the two organisations and were first contested in 1966.

This year's AALS Trophy winner was David Mayall with his 5in. gauge BR Standard Class 2 locomotive. Very finely detailed and extremely well finished, it ran sweetly and attracted many admiring comments. Mike Chrisp, an FMES Vice President, awarded David with the AALS Trophy during the presentation which included a few words each from Bob Polley - FMES Chairman, Paul Naylor - FMES Membership Secretary, Martyn Cozens - SCMES Secretary and Ivan Hurst - the other FMES Vice President who brought formalities to a close. Martin Parham received the SCMES award for having travelled the furthest to attend the event.

The day concluded with a barbecue, much enjoyed by all present, accompanied by a choice of hot and cold drinks which had also been available throughout the day. Bacon baps were served first thing and hot samosas and a selection of cakes at lunchtime. Thanks are due to Ray and Anna Gilbert for all their work with the catering.

Federation of Model Engineering Societies Newsletter

Website Topics

BUILDING THE FUTURE

Federation of Model Engineering Societies

We provide support for affiliated Model Engineering Societies ('clubs') in the UK and Northern Ireland. We act on behalf of members in co-ordinating responses to important issues facing the hobby of Model Engineering including safety and legislation. We also promote the hobby through news, events and competitions and provide advice and guides for good practice in club activities.

FMES is a company limited by guarantee and was established originally in 1970 by Model Engineers for



Model Engineers. We run entirely through the effort of volunteers from member clubs, seeking information and comment from commercial and official bodies where relevant.

We are continuing to monitor the website and in particular take note of any comments or suggestions that we receive. Few problems have been reported, and we endeavour to correct these quickly, but do let us know if you are struggling with anything.

We would like to remind you that the primary contact holds the main login code for their club, but he or she is also able to request another login code to enable club members to access some of the hidden pages without accessing the club contact details on the database. If you would like this code, please ask your club primary contact, who can request it from us at the email address below. Note that the code may change from time to time however to control the distribution.

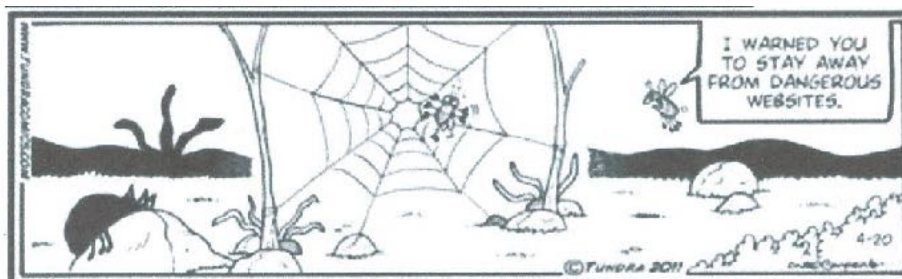
The news and events pages are also there for us and clubs to broadcast information of interest to website visitors, so if you would like to see published such items, please let us know by following the directions on the website or e-mailing us at the address below.

We note that the number of clubs that have registered their access is slowly rising, and we exhort all clubs to make sure that their primary contact has registered and can

access the hidden areas of the website. If you, as a primary contact, have not registered, please follow the 'forgotten password' option on the login page, using your club identification number as user name. If you do not know this, please contact us as below.

We are learning how we might develop the Website, however we are taking care that what we do is right, and we do not introduce too much at once. There is so much more we could do if we had more resource, and this is a theme of another article in this newsletter. Development will be on two fronts: to improve the information and use for club primary contacts, and also to provide a place for all members (including members of the public) to find useful information. This latter intention is to fulfil our aim to promote the hobby and assist interested people find clubs to join and follow their interests.

If you have any comments you wish to make, or questions to ask, please do not hesitate to contact us on info@fmes.org.uk





YOUR FEDERATION NEEDS YOU!

We have been asking for volunteers to help us deliver our strategy and services for a while now and the impression we get is of tumble weed blowing through and not much else. We know that some people have suggested that they could assist us in some capacity and so maybe this is an unfair comparison, however we have yet to see more than a single willing volunteer metaphorically sitting around the table and taking on activities that we desperately need doing.

We – the Board of Directors - are not sure what we need to do to encourage people to volunteer: you tell us! If you want to say 'in the name of God, go!' we shall go if it means the survival of FMES. Yes, we are getting close to this point through age, disillusionment and tiredness and there is only a limited amount of time left to us before we will be obliged to issue the winding up resolution at an AGM.

We have tried to respond to the requests for change made by you all and we think that we have created a working and attractive means to promote the hobby and provide our services to members through the Website. We have suggested that we could add value to clubs in other ways in addition to insurance and boiler testing and so we think that we have the tools capable of doing more for the hobby. The Young Engineers initiative and other such activities

are starting points. The organisation is therefore equipped to prosper...if only we had the volunteers to do it!

We know that other representative organisations have similar difficulties, so it is apparently 'not personal'. We also know that a reasonable percentage of Model Engineers are competent and enthusiastic managers too, all we need are a few to want to join us to have the chance to add value on a wider stage. If we collectively do not get volunteers, then not even the core services will be delivered...like boiler testing, or H&S involvement and that will affect the very existence of large parts of the hobby.

You will see more 'noise' about this subject from us over the next few weeks. We hope that this will inspire some to want to find out more and a few of these to want to take it further.

If you are interested and feel that you have some time and desire to get involved, we will be delighted to chat with you: we are flexible in what we need people to do, the choice of jobs can be adjusted to suit individuals and how they want to work!

Now is the time to decide if you want to follow this up.

Please contact us in the first instance by email at info@fmes.org.uk or visit us at the Midlands ME exhibition in October and we will welcome anyone who drops in to discuss this with us.

Federation of Model Engineering Societies Newsletter

Snippets

Boiler certificate books at MEX
Please note there will be a limited amount of boiler certificate books etc at the Midlands Exhibition this year, to guarantee yours please preorder for collection from the Boiler Registrar on 01252 684688 or email at david.mayall@fmes.org.uk, normal club request as usual through the above contact details.

Extract from a club newsletter, Mr X used for anonymity
CERTIFICATES of COMPETENCY (which are accepted by other societies and clubs)

For new, or not so new drivers of steam or battery locos, if you haven't already done so please speak to Mr X to obtain your competence certificate. This is not an onerous test you have to pass, but more a way of making sure you are aware of the potential dangers and hazards when hauling passengers. Refresh yourself with our Code Of Conduct (all the information you require is in there), a copy of which is pinned to the notice board in the club house and be aware of potential hazards while on the track.

Going around the bend.

Some years ago, in fact in 2016, we were concerned about the amount of cant on the raised track. Although published in the model engineering press, the maths are a little daunting for some. So willing to try a different route to the answer, we thought some bright young trainee track engineer might like to tackle the issue.

So I wrote to Network rail and the PWI, a bit cheeky but why not. Nothing heard from NWRail but a delightful reply from the PWI and not just the young track engineer but from the head man himself, the CEO, Mr David Packer, a member of the Northampton Society.

Going round the bend (Cont'd)

I am sure he would allow me to quote his reply as he seems to sum up the whole issue most eloquently.

“Our Secretary has circulated your request to our membership, but I may be able to give some help personally in addition to what they might offer. As well as being CEO of the PWI, I am a member of the Northampton Society of Model Engineers and am on the committee. I'd be happy to talk to you about it, as that might be a better way of understanding completely the challenge that you face. However, the difficulty of applying curve theory to a raised track is the fact that the alignment is very constrained by the track's construction. Changes to transitions will be tricky unless you are thinking of rebuilding sections of the track. I'm sure that I can find out from our club what cant we use on our comparable curves, but at first glance your proposed values look a bit high. One of the challenges of model operation is that the centre of gravity is much higher than on a full-scale railway. If a train stops on a curve, we have to be sure that there is no danger of it tipping over – even if the passengers lean out to see what is going on! My initial feel is that a figure of 3-5mm is likely to be more appropriate, but it needs some further thought.

The 'cup of tea' test result also depends very much on the vehicle on which the cup is riding. A loco tender is probably the worst riding vehicle of all as it's lightweight with hard springs. If one of your members has a riding truck that seems to ride well and has space for a cup of tea, that would be a fairer test. I found a YouTube clip of what appears to be your track (https://www.youtube.com/watch?v=PIVvx_PH7ck). If that's right, the loco seems to take the track quite well and, for model engineering it's loco derailment that poses the highest risk, especially on a raised track. You can also see that the tender is riding much worse than the loco.

Courtesy
David Packer

Young Engineers Federation Trophy and Polly Model Engineering Prize

**Application in the last 3 pages of the newsletter and on the website
www.fmes.co.uk**

Federation of Model Engineering Societies Newsletter

Stoke Row Steam Rally June 11/12th 2022 by Paul Naylor

We should get out more' my wife and I said and so when we happened to see the above rally advertised in a newsletter my wife gets on a *completely* different subject, we decided to go. This was the first rally held by Stoke Row and Vintage Club Limited for a few years thanks to C19 and they went all out to make it a good show. I went on the Saturday and the weather was blessed. The main theme of the show was vehicles, including an excellent selection of traction engines, tractors vintage cars, motorcycles and also stationary engines. There was also a good choice of food, stalls and... a beer tent!

Model engineering was in evidence by almost as large a contingent of miniature road vehicles as their full size brethren, a portable railway track provided and manned by Reading SME, and a tent with some static exhibits of locomotives and other engines. Photos probably speak louder than words:



Sam (pictured) and Matthew Robinson's Mamod engines



George Saffrey and Charles Benham from Reading SME ready for passengers



Chris Pettitt's Caradoc tractor, built in 1996 and rebuilt for it's first steaming in 2021.



The exhibition tent.



Federation of Model Engineering Societies Newsletter

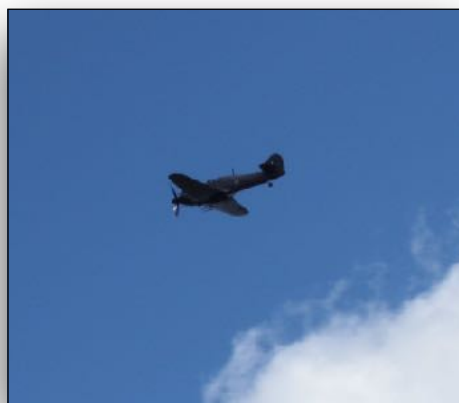
Stoke Row Steam Rally June 11/12th 2022 by Paul Naylor



Geoff and Susan Organ from The Forest of Dean and MSRVS with their 4" Foster and truck (shortly before the water tank overfilled filled and soaked us all!).

Only some of the miniature steam on display in the arena after their parade...dwarfed by an impressive full size Burrell showman's engine on the end of the full size contingent.

And finally, a fly past to put icing on the top:



A little thermodynamics,, an oldie but great fun, with thanks to Worthing & District SME

The following is an actual question given on the University of Liverpool chemistry final exam paper. The answer by one student was 'so profound that the professor shared it with colleagues by the Internet.

Bonus question: is Hell exothermic (gives off heat) or endothermic (absorbs heat)?

Most of the students wrote proofs of their beliefs using Boyle's law that states gas cools when it expands and heats when it is compressed, or some variant. One student, however, wrote the following:

First, we need to know how the mass of Hell is changing in time. So we need to know the rate at which souls are moving into Hell and the rate at which they are leaving. I think we can safely assume that once a soul gets to hell it will not leave. Therefore, no souls are leaving.

As for how many souls are entering Hell let's look at the different religions exist in the world today. Most of these religions state that if you are not a member of their religion you will go to Hell.

Since there is more than one of these regions and since people do not belong to more than one religion we can project that all souls go to Hell.

With birth and death rates as they are we can expect the number of souls in Hell to increase exponentially. Now, we look at the rate of change in the volume in Hell. Because Boyle's Law states that in order for the temperature and pressure in Hell to stay constant the volume of Hell must expand proportionately as souls are added.

This gives two possibilities:

1. If Hell is expanding at a slower rate than the rate at which souls enter Hell, then the temperature and pressure in Hell will increase until all Hell breaks loose.

2. If Hell is expanding at a rate faster than the increase of souls in Hell then the temperature and pressure will drop until Hell freezes over.

If we accept the postulate given to me by Sandra during my first year at university that "it will be a cold day in Hell before I sleep with you" and take into account the fact that I slept with her last night, then number two must be true and that I am sure that Hell is endothermic and has already frozen over.

*The corollary of this theory is that since Hell has frozen over, it follows that it is not accepting any more souls and is extinct leaving only Heaven, thereby proving the existence of a divine being which explains why last night Sandra kept shouting Oh my G*d*

This student received the only A

Federation of Model Engineering Societies Newsletter

Federation of Model Engineering Societies Committee

| | |
|--------------------------------------|---------------|
| President | Brent Hudson |
| Vice President | Mike Chrisp |
| Vice President | Ivan Hurst |
| Chairman | Bob Polley |
| Secretary | Peter Squire |
| Treasurer & Newsletter | David Goyder |
| Vice Chairman & Membership Secretary | Paul Naylor |
| Boiler Registrar | David Mayall |
| Safety Officer | Robert Walker |

INSURANCE CLAIMS AND INCIDENTS

All claims and reports of incidents should be notified in the first instance to Walker Midgley
FEDERATION INSURANCE BUSINESS Managed by Walker Midgley Insurance Ltd
. Committee members' contact details can be found on the Federation MES web site

www.fmes.org.uk

Publications Available from Federation of MES

The FMES publications listed below are available from our stand at rallies and exhibitions or by post from David Mayall. Please make contact first by phone or email to get combined postage costs when ordering more than one item. (See note below). The figures shown here are for single items only. Please make cheques payable to 'Federation MES' or use BACS to Sort Code 20-71-82 Acct 43755967.

| Title | From Our Stand |
|---|----------------|
| Examination & Testing of Miniature Steam Boilers BTC 2018 - Orange Book | Free |
| Vol 1, 3 bar litres to 1100 bar litres. | |
| Vol 2 under 3 bar litres. | |
| Vol 3 LPG tanks under 250 ml. | |
| Boiler Test Certificates - Pad of 50 | FREE* |
| Written Scheme of Examination - Pad of 50 | FREE* |
| Small Boiler Test Certificate - Pad of 50 | FREE* |
| Boiler History Record Card - Pack of 10 | £3.50 |
| Plastic wallets to hold certificates size A5 | £0.75 |
| HS 2020 Passenger-carrying min railways 'Guidance' post included..... | £4.00 |

David Mayall

Tel: + 44 1252 684 688

Email: david.mayall@fmes.org.uk

* These publications are issued free of charge to fully paid up member Clubs and Societies ONLY, and are NOT available for general sale. For delivery by mail, the cost of postage and packing is £5.00, and must be borne by the Club/Society placing the order.



Federation Trophy & Polly Model Engineering Prize

Entry Form

Aim: To encourage young people to participate in the hobby of model engineering, to acquire relevant engineering skills and a knowledge of appropriate materials.

Participation: The award is open to any young person aged under 24 at the time of entry. The judging of entries will be age-relevant, meaning that younger entrants will be at no disadvantage to their more mature and experienced peers.

Nomination: Nominations are invited by any Club or Society affiliated to the Federation of Model Engineering Societies. The Nominee must be an active member of that Club or Society.

Skills: The Nominee must have demonstrated the acquisition of skills in the use of appropriate materials, metalworking hand tools and/or machinery/equipment by producing a model of any type or form, any other mechanical item or a piece of workshop tooling associated with the hobby of model engineering, whether complete or part-built, and constructed using metalworking hand tools or equipment normally found in the home, school, Club or Society workshop. Supervisory input and items built as apprentice pieces in a training environment are acceptable. The work shall be the nominee's own but normally acceptable commercial fittings, fixings, fastenings or other components may be used.

Club Activities: It is important that the entrant is well-rounded in the hobby of model engineering and so the participation in club/ society activities will be assessed as a part of the judging process.

Judging: Nominations are judged and awards are agreed by the Committee of the Federation of Model Engineering Societies, with approval from the proprietors of Polly Model Engineering Limited. Their decision is final.

The Winner: The winning entry will receive a cash prize and a trophy donated by Polly Model Engineering Limited and the Federation of Model Engineering Societies (which shall be retained by the winner). Further cash prizes will be awarded to runners-up.

Award Presentation: The award will normally be presented at an Annual General Meeting of the Federation of Model Engineering Societies at which representatives of the winner's family and Club or Society are welcome to attend. The AGM typically takes place during March each year.

Entry Forms: Completed nomination forms must be sent to the FMES Secretary, 18 Wakefield Way, Nether Heyford, Northampton NN7 3LU to arrive no later than 31st December 2022. Alternatively, they may be scanned and sent in Adobe Acrobat (PDF) format to: secretary@FMES.org.uk

The Committee of the Federation of Model Engineering Societies acknowledges with gratitude the generous support provided by Jayne & Andy Clark of Polly Model Engineering Limited in promoting this award.



FEDERATION TROPHY & POLLY MODEL ENGINEERING PRIZE

Entry Form

To Be Completed by the NOMINEE (Please Print)

Name of FMES Affiliated Club or Society:

Name of Entrant:

Name of Parent or Guardian (if under 18):

Date of nomination:

Age at date of nomination:

Home address:

Telephone*:

Email*:

Signature:

*These should be the contact details of a parent or guardian if the nominee is under 18 years of age

To Be Completed by the SPONSOR (Please Print)

Name (please print):

Position held in Club or Society:

Home address:

Telephone:

Email:

Signature:

Additional Information

1. Please supply a summary of the Nominee's relevant project(s) completed and/or in hand.
2. Please supply photographic evidence and state to what extent the Nominee's work has been completed unaided or produced under guidance - please note that supervision is acceptable.
3. Please supply a summary of the Nominee's involvement in Club or Society activities.

Items 1 and 2 above may be supplied by the nominee, for example in the form of a 'Portfolio', with separate comments added by the sponsor (e.g. to state to what extent the Nominee's work has been completed unaided or produced under guidance). Item 3 should be provided by the sponsor. Material may be provided electronically, in the form of an Adobe Acrobat PDF file, or on paper or a combination of the two.



General Data Protection Regulations 2018

Federation of Model Engineering Societies is pleased to be associated with Polly Model Engineering Limited to promote model engineering as a creative hobby for young people.

The presentation of awards at the Federation’s Annual General Meeting provides an ideal opportunity to publicise our work.

Effective publicity includes photography.

Federation of Model Engineering Societies seeks your permission to photograph your child / children with his / her / their model engineering projects and being presented with his / her / their awards.

Photo Release Form

As the parent / legal guardian of (please print your child’s name below)

.....

I grant the Federation of Model Engineering Societies permission to take and use photographs as described above for any legal purpose including but not limited to publicity, illustration, advertising and web content.

I understand that no royalty, fee or other compensation shall become payable to me by reason of such use.

Signature:

Name (please print):

Date:

Telephone:

E-mail:

Address: